



**2023  
CAPITAL  
CAMPAIGN**

**A KIDS TO LOVE  
EXPANSION**

---

**MENTAL HEALTH • EDUCATION • SERVICE**

**[kidstolove.org](http://kidstolove.org)**

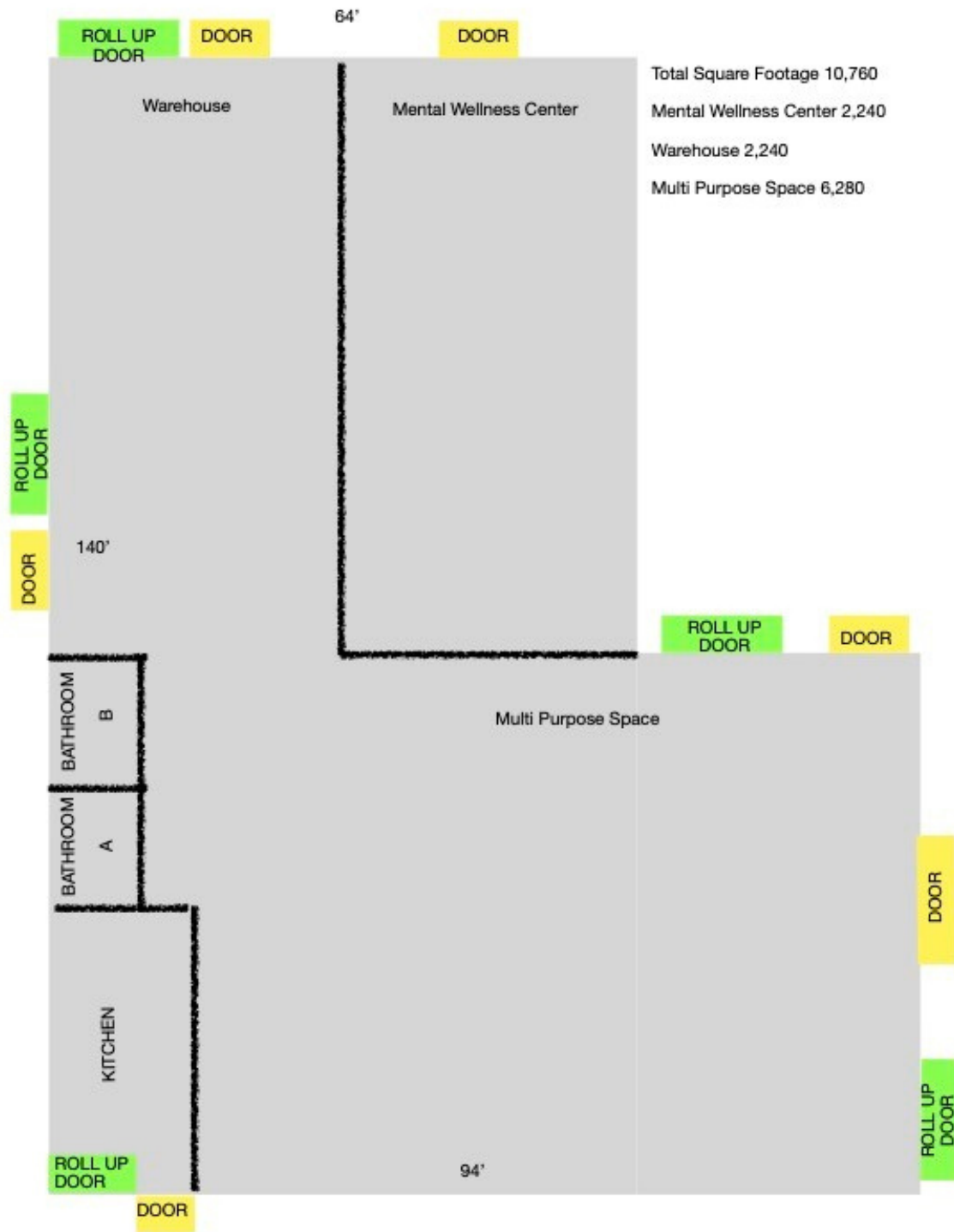
# COMMUNITY INVESTMENT: MENTAL HEALTH. EDUCATION. DIRECT SERVICES.

Since 2004, Kids to Love has directly impacted the lives of 300,000 children living in foster care. We've grown to offer 12 service-first programs and employ 26 staff members. Our center at 140 Castle Drive in Madison is at now at capacity. Our Capital Campaign includes a facility expansion of 10,760 square feet adjacent to our current center. The new building will have customizable entrances to serve three critical areas of need:

**Mental Health:** Our new Smith Family Mental Wellness Center, home to the Grant Hill Trauma Team will deal head-on with the trauma of abuse, neglect, and abandonment by offering proven therapies and licensed clinicians who will meet the specific needs of children living in foster care. 2,240 sq. feet of space will be designated to 5 holistic therapy rooms, along with office space for our therapists and a waiting area for families.

**Education:** This 6,280 sq. feet of multi-purpose space will offer mobile STEM labs and a commons space to support KTECH, our state licensed private school offering certifications in Mechatronics, Robotics, Soldering, and Virtual Reality. It will also support as an educational training area for our foster families through our Child Placing Agency as we recruit and license more families. Other community services include training, meetings, KTECH graduations, and a new commercial kitchen.

**Direct Services:** This warehouse space of 2,240 square feet will be utilized to meet the growing need of serving our kids and families through year-round programs such as Christmas, More than a Backpack, Food Boxes for Foster Families, and Emergency Services.



# 2023 Capital Campaign

---

A Capital Campaign to expand and enhance Kids to Love's footprint by adding a new facility at 140 Castle Drive in Madison with an intentional focus on Mental Health, Education, and Direct Services.

**Project Cost: \$3 Million**

**Fundraising Goal: \$2 Million**

## **Mental Health**

Give them space to heal

**\$800,000**

- Therapy Rooms \$300,000 (3 Available)
- Private Porch/Entrance \$100,000
- Lobby/Waiting Area \$150,000
- Office Space \$250,000

## **Education**

Give them space to learn

**\$450,000**

- Mobile STEM Labs \$100,000
- Campus Commons \$50,000
- Commercial Kitchen \$200,000
- Training/Events Space \$100,000

## **Direct Services**

Give them space to thrive

**\$750,000**

- Structural Costs \$500,000
- New Mezzanine \$100,000
- Sliding Doors \$50,000
- Parking Renovations \$100,000